



Class Schedule

Technically Speaking

**Winter Quarter
2009 - 2010**



ARE YOU IN DEMAND
In Today's Job Market?

Index

Contact.....	2
Financial Aid.....	2
Registration.....	3
Facts at a Glance.....	3
Cache Business Resource Center.....	4
Lee Tansock Recognized.....	4
Schedule: Basic Skills & Communication	
Academic Learning.....	5
ASL - American Sign Language.....	6
Schedule: Business/Administrative Professional....	6
Schedule: Computers & Software.....	7
Schedule: Construction Trades.....	10
Schedule: Dental Assisting.....	12
Schedule: Drafting/CAD.....	12
Schedule: Health Professions.....	12
Schedule: Manufacturing.....	14
Schedule: Public Service.....	17
Article: Are You In Demand in Today's Job Market? ...	18
Schedule: Service Professions	
Cosmetology.....	20
Culinary Arts/Meat Cutting.....	20

Fashion Merchandising.....	21
Interior Design.....	21
Real Estate.....	22
Schedule: Transportation Professions.....	22
Nursing Prerequisites (USU Courses).....	23
Highlights.....	24

SCHEDULE A TOUR

Take a look at our facilities with a personalized tour. Call 435.750.3224 to schedule your appointment today! Youth groups, class field trips, individuals, etc., all welcome!



Contact

Logan Main Campus

1301 North 600 West, Logan
435.753.6780
Toll Free 866.701.1100

Logan West Campus

1400 North 1000 West, Logan
435.753.4708

Brigham City Campus

325 West 1100 South, Brigham City
435.734.0623
Toll Free 800.827.0614

www.batc.edu

Financial Aid

BATC participates in the following assistance programs that aid students in covering the costs associated with education:

- Federal & State Grants
- Adult & High School Senior Scholarships
- Benefits for Veterans
- Community Aid & Other Services

Learn more about financial aid opportunities at BATC by contacting a financial aid specialist at 435.750.3204 or 435.750.3114.

Registration

How

1 Register Monday -Thursday from 7:30 am to 6 pm and Friday from 7:30 am to 4:30 pm at the Logan or Brigham City Campuses. You may register in-person or *call with a credit or debit card.
**In-person registration will be taken first.*

2 Registration begins December 7; no pre-registration will be accepted. Register at least one week before class begins. Seating is limited!

BATC Policies & Procedures

Registration for the short-term courses will be done on a first-come, first-serve basis and tuition must be paid at time of registration. VISA, MasterCard, and Discover are accepted.

Short-term tuition refund policy: 100% will be refunded up to five working days after the first scheduled class, and none thereafter. For courses whose lengths are less than five days, 100% will be refunded prior to the beginning of class and none thereafter.

Online Courses

1 Go to www.batc.edu and select e-Learning. Locate the course in which you wish to enroll.

2 The link will provide the registration process for your course.

For Frequently Asked Questions (FAQ) such as hardware/software requirements, please visit www.batc.edu and click on e-Learning

What

Facts at a glance

What are occupational upgrade, lifelong learning, and general interest courses?

BATC offers many occupational upgrade, lifelong learning, and general interest courses, which are outlined in this schedule. These courses vary in length from 10 hours to 250 hours and are offered primarily in the evening. These courses are designed to improve employment skills and/or stimulate interest in rewarding occupational programs. Registration for short-term training is held quarterly.

What is a certificate program?

Our nationally accredited programs generally take from six months to one year to complete at a tuition rate of only \$1.40 per hour (apprx. \$2,000 for a full one-year program.) These career programs provide industry-recognized training and program credentials needed to enter the workforce, to change occupations, or to advance in career positions. For more information visit us at www.batc.edu or call Gloria at 435.750.3224 to schedule a tour.

What are open-entry/self-paced courses?

Open-entry/self-paced courses are individualized and available for registration any time if openings exist.



Bridgerland Applied Technology College

would like to recognize Lee Tansock, Director of Distance Education, for receiving the USHE Exemplary Faculty Use of Technology Award for Collaboration and Mentoring

Lee Tansock

Recognized for Excellence

Lee has been the driving force behind the development of the Technology Enhanced Instruction (TEI) courses at BATC. In cooperation with a variety of different faculty and staff, Lee has developed online courses at BATC as well as e-Learning components that add value to face-to-face courses.

Congratulations to Lee for this accomplishment!



Located at BATC West Campus

Cache Business Resource Center

"Providing resources to assist emerging and established businesses"

The CacheBRC and BATC have Teamed up with LearnKey to Offer over 250 Online Courses

For just \$30 per course you can start accessing the online courses almost immediately. Go to <http://cachebrc.com/Online-Training.html> for the complete list of courses available in the following areas:

Personal Productivity, Office Productivity, Computer Fundamentals, IT Database Technologies, IT Networking, Web & Graphic Design, K-12 Education

Small Business Workshops & 3rd Thursday Entrepreneurial Networking

Check out www.cachebrc.com for more information

To register online and learn more about the CBRC, visit

www.cachebrc.com

Partners & Resource Providers

Bear River Association of Governments • Bridgerland Applied Technology College
Cache Business Resource Center • Cache Chamber of Commerce
Northern Utah SCORE • Small Business Development Center
U.S. Small Business Administration

Contact

1410 North 1000 West
Logan, UT 84321
435.213.8713

Office hours: Monday - Thursday from 9 a.m. to 3 p.m.
www.cachebrc.com



Class Schedule

Certificate Programs & General Interest Courses

Basic Skills & Communication

Academic Learning

OPEN-ENTRY / SELF-PACED

You may need to enroll for more than one month in order to complete the course depending on the rate you progress.

ENTRANCE EDGE

Learn the academic skills needed for success prior to entering the BATC program of your choice.

Logan & Brigham City

ESSENTIAL EDUCATION SKILLS

Upgrade or refresh your educational skills in reading, English, math, spelling, and more. A pre-test is used to determine placement.

Logan & Brigham City

GED TEST PREPARATION

Prepare to pass all five parts of the GED test – or only work on the sections you need!

Logan & Brigham City

Flexible Hours

•Logan•

Contact Sean at 750.3238 for a start date. Arranged days and times: Schedule 5 to 30 hours a week.

M - F Arranged \$48* (per month)
Includes basic books & fees

•Brigham City•

Contact Karen at 734.0614, Ext. 21 for a start date.

M - F Arranged \$48* (per month)
Includes basic books & fees

JOB SEEKING SKILLS WORKPLACE RELATIONS

Jump into your dream job with great communication and workplace readiness skills. Become the person chosen for the job, rather than an unemployment statistic. These courses have online components.

Logan & Brigham City

FUNDAMENTALS OF MATHEMATICS (MATH 800 SKILLS)

Prepare for college-level mathematics. Start date and schedule arranged with instructor. Please call 750.3238 or 734.0614, Ext. 21 for details.

Logan Main Campus & Brigham City

Open-Entry Arranged Arranged \$48 month*

ALGEBRA FOUNDATIONS (MATH 850 SKILLS)

Learn or review basic concepts necessary for success in algebra. Please call 750.3238 or 734.0614, Ext. 21 to arrange start date and schedule for open-entry/self-paced course.

Logan Main Campus & Brigham City

Open-Entry Arranged Arranged \$48 month*

Logan Main Campus

Jan 26 - March 25 Tu Th 6:30 pm - 8:30 pm \$99* ALC2171

ELEMENTS OF ALGEBRA (MATH 900 SKILLS)

Gain beginning algebra concepts and skills to prepare for Math 1010.

Logan Main Campus & Brigham City

Open-Entry Arranged Arranged \$65 month*

Logan Main Campus

Jan 12 - March 18 Tu Th 6:30 pm - 8:30 pm \$119* ALC2071

MATH & ALGEBRA TUTORING

Logan & Brigham City

Math 800 or 850	Arranged	Arranged	\$48 month*
Math 900, 1010, or 1050	Arranged	Arranged	\$65 month*

For more information, please call Sean at 750.3238 or Karen at 435.734.0623, Ext. 21. Evenings: 750.3104.

INTERMEDIATE ALGEBRA (MATH 1010 SKILLS)

Learn linear equations and inequalities, polynomials and exponents, rational expressions, quadratic equations, and more.

Logan Main Campus & Brigham City

Open-Entry Arranged Arranged \$65 month*

Logan Main Campus

Jan 12 - March 18 Tu Th 4:30 pm - 6:30 pm \$119* ALC202

Jan 25 - March 31 M W 6:30 pm - 8:30 pm \$119*

COLLEGE ALGEBRA (MATH 1050 SKILLS)

Covers the same concepts as Math 1050 with emphasis on ACCUPLACER® test preparation. Succeed in math with our small class sizes!

Logan Main Campus

Open-Entry Arranged Arranged \$65 month* ALC2041

Jan 12 - March 18 Tu Th 3 pm - 5:30 pm \$159*

BASIC ENGLISH REVIEW

Gain confidence and skill in your writing. This class is designed for those who need help passing English tests or improving their language skills for the workplace.

New!

Logan Main Campus

Jan 12 - March 11 Tu Th 2:30 pm - 4:30 pm \$83* ALC2091

GED PRACTICE TEST

Are you ready for the GED test? Try all five sections for just \$10. Free for registered students (one free test per month).

Logan

Every Wednesday 1:30 pm
Every Thursday 6 pm

Brigham City

Every Tuesday 9 am

Other times are available by appointment. For more information, please call Sean at 750.3238 or Karen at 435.734.0623, Ext. 21. Evenings: 750.3104.



“The instructors in Academic Learning really taught the material on a level that I could understand. The class size was small and I felt comfortable asking questions.”

-Graduate

*Text and/or supplies may be required

ASL - American Sign Language

AMERICAN SIGN LANGUAGE (ASL) I - BEGINNING CLASS

Experience the exciting and beautiful language of the American Deaf. This independent language opens doors and minds—whether you just want to chat with Deaf friends, communicate with young children, or enter the expanding field of ASL interpreting. This class is the place to start. Please call 750.3106 for more information.

Logan Main Campus ASL2011
Jan 11 - May 19 M W 6:30 pm - 8 pm \$159*

AMERICAN SIGN LANGUAGE (ASL) IIA - INTERMEDIATE PART A

This is the first half of ASL 2 for students who have successfully completed the ASL 1 class or who have equivalent signing skills. Please call 750.3106 for more information.

Logan Main Campus ASL2023
March 3 - May 19 Wed 6 pm - 8:30 pm \$105*

AMERICAN SIGN LANGUAGE (ASL) II - INTERMEDIATE CLASS

Continue learning basic ASL skills. For those with ASL 1 or previous signing experience. Please call 750.3106 for details.

Logan Main Campus ASL2021
March 1 - May 28 M - F 1 pm - 2:30 pm \$159*

AMERICAN SIGN LANGUAGE (ASL) III - ADVANCED CLASS

Builds on ASL 1 and 2 skills with a focus on expressive skills using role-shifting, relating personal experiences, and delivering presentations in ASL. Students improve their knowledge of spatial relationships and increase their ASL vocabulary. Advanced ASL is for students who have passed ASL 1 and ASL 2 with a B- or better, or have demonstrable equivalent skills. Please call 750.3106 for details.

Logan Main Campus ASL2031
March 1 - May 28 M - F 8:15 am - 9:45 am \$159*

AMERICAN SIGN LANGUAGE (ASL) III - PRACTICUM

Focuses on improving students' fluency and conversational skills to prepare them for ASL 4 and ASL 5. For students who have completed ASL 3 or who have equivalent signing skills. Please call 750.3106 for details.

Logan Main Campus ASL2032
Jan 11 - March 19 M W F 10 am - 11 am \$75*

CREATE THE PERFECT RESUME/INTERVIEW

Can't get an interview? This course will assist you in developing a resume that demands attention and gets you an interview so you can sell yourself!



Logan Main Campus BUS2531
Jan 13 & 20 Wed 1 pm - 3 pm \$15*

OPEN-ENTRY / SELF-PACED

You may need to enroll for more than one month in order to complete the course depending on the rate you progress.

ACCOUNTING I & II

Learn the basic accounting principles required for managing a small business.

Logan & Brigham City

BUSINESS MATH (10-KEY)

Touch method for calculations with attention on speed and accuracy.

Logan

READY TO WORK-EMPLOYMENT SURVIVAL SKILLS (DWS COURSE)

Basic math and reading, communications, customer service, time management, teamwork, and pre-employment skills will be taught. Available from 8 am - 8 pm (2 hr blocks)

Logan

BUSINESS ENGLISH

Learn English essentials, including sentence structure, grammar, punctuation, parts of speech, and proofreading.

Logan

KEYBOARDING/SPEEDBUILDING

Logan: Available from 2 pm to 8 pm. Contact Sue at 750.3208.

Brigham City: Available from 8 am to 12 noon. Contact Jenny at 734.0614 ext. 17. **\$45 per month at 1.5 hr blocks.**

CAREER ENHANCEMENT

Develop skills in Accounting I, Accounting II, Electronic Presentations, Business Math, Operating Systems Fundamentals, Database Applications I, and/or Keyboarding.

Brigham City

AVAILABLE COURSE TIMES

Logan Main Campus • Course Start Dates: Jan 4; Feb 1; March 1
M - Th 2 pm - 8 pm \$55*
(2 hr blocks) (per month)
Please call 750.3208 to arrange a start date.

Brigham City
M - Th 8 am - 12 noon \$55*
(2 hr blocks) (per month)
M W 6 pm - 9 pm \$55*
(per month)
Day blocks: Please contact Kristen at 435.734.0614 ext. 24 for a start date.
Evening block: Please contact Rosemary at 435.734.0614 ext. 24 for a start date.

Business/Administrative Professional

Certificate
Logan & Brigham City

Accounting



An increase in the number of businesses, changing financial laws and regulations, and increased accountability requirements will continue to drive the need for accounting professionals. DWS lists this career group as a 5-star career. Logan: Contact Kyle at 750.3212
Brigham: Contact Jenny at 734.0614, Ext. 17
www.batc.edu

ADMINISTRATIVE PROFESSIONALS CONFERENCE



April 22, 2010

*Mark your calendar!
More information coming soon.*

*Text and/or supplies may be required

Business Technology



Certificate
Logan & Brigham City

Utah DWS projects office and administrative support careers to have the most annual average openings in Cache Valley during the 2006-2016 period. Career opportunities are competitive—applicants will need extensive administrative knowledge and proficiency with software applications. Contact Kyle at 750.3212.
www.batc.edu

Computers & Software

A+ ESSENTIALS

This class is designed to explore physical and functional characteristics of computer devices and components and trends in computer architecture. Emphasis will be placed on configuring a microcomputer, troubleshooting, interrupts, device and memory management, virtual memory and paging, file management, and performance analysis. Lab exercises include assembling a computer and troubleshooting problems. Prepares student for A+ certification exams. *Includes a 1-hr lecture and 2-hr lab.*

Logan West Campus IFT2041
Jan 12 - March 16 Tu W Th 6 pm - 9 pm \$135*

A+ TECHNICIAN

This class is designed to teach common components and features in operating systems; command prompt use; installing, configuring, upgrading and troubleshooting common operating systems; and basic networking. Prepares student for A+ certification exams. *Includes a 1-hr lecture and 2-hr lab.*

Logan West Campus IFT2121
Jan 12 - March 16 Tu W Th 6 pm - 9 pm \$135*

ABCs OF YOUR COMPUTER

Giga what? This course is designed to introduce the computer to students with little or no computer experience. Text and flash drive required.

Logan Main Campus BUS2531
Jan 5 - Feb 4 Tu Th 6:30 pm - 8:30 pm \$40*

Brigham City BBS2121
Jan 19 - Feb 18 Tu Th 6 pm - 8 pm \$40*

ACCESS 2007

See the Business Software Open-Entry / Self-Paced Schedule on this page for dates and times.

C# & ASP.NET PROGRAMMING I

Learn to use Microsoft Visual Studio and these languages to program and make dynamic Web sites. Prerequisite: Must have strong HTML skills. *Includes a 1-hr lecture and 2-hr lab.*

Logan West Campus ECM2221
Jan 12 - Feb 9 Tu Th 6 pm - 9 pm \$60*

*Text and/or supplies may be required

C# & ASP.NET PROGRAMMING II

Learn ASP.NET and C# using Microsoft Visual Studio to program and make dynamic Web sites. Prerequisite: Must have strong HTML skills and ASP.NET & C# Programming 1. *Includes a 1-hr lecture and 2-hr lab.*

Logan West Campus ECM2321
Feb 11 - March 11 Tu Th 6 pm - 9 pm \$60*

BUSINESS SOFTWARE OPEN-ENTRY / SELF-PACED SCHEDULE

You may need to enroll for more than one month in order to complete the course depending on the rate you progress.

- Access 2007
- Excel 2007 Level I or II
- Word 2007 Level I or II
- PowerPoint 2007
- MS Operating System
- QuickBooks 2008 Level I or II

AVAILABLE COURSE TIMES

Logan Main Campus • Course Start Dates: Jan 4; Feb 1; March 1
Courses listed above M - Th 2 pm - 8 pm \$55*
(2 hr blocks) (per month)
Please call 750.3208 to arrange a start date.

Brigham City
Courses listed above M - Th 8 am - 12 noon \$55*
(2 hr blocks) (per month)
M W 6 pm - 9 pm \$55*
(per month)

Day blocks: Please contact Kristen at 435.734.0614 ext. 24 for a start date.

Evening block: Please contact Rosemary at 435.734.0614 ext. 24 for a start date.

CISCO CERTIFICATION I

This course is the first in a two-course series designed to prepare students to pass the examinations for Cisco Certified Network Associate (CCNA).

This course presents network concepts, including hardware, software, topologies, network management, and problem diagnosis. Additional topics include stratified load forecasting and the critical evaluation of the effectiveness of alternative network topologies.

Logan West Campus IFT2031
Jan 11 - March 16 M - F 8 am - 11 am \$210*

COMPUTER HACKING

Learn the techniques hackers use to break into systems, and how to defend and secure your systems against hackers. Students will learn about different types of hacker activities, the hacker's mind-set, and preventing hacker penetration. Students will also learn about authentication procedures, performing security audits, encryption standards and implementations, ports and protocols that hackers manipulate, and how to engage in proactive detection. This course will prepare students for the Security+ exam to become a Certified Security Professional.

Logan West Campus IFT219
Jan 11 - March 18 M W Th 6 pm - 9 pm \$120*
Jan 11 - March 19 M Tu F 11 am - 2 pm \$120*

*Text and/or supplies may be required

COMPUTER LITERACY

Gain a basic knowledge of Microsoft Excel, Word, Access, and PowerPoint as well as Windows and the Internet. This course fulfills the Computer Literacy requirement for certificate credentials. Please call 750.3208 (Logan Main Campus) or 435.734.0623, Ext. 24 (Brigham City) to arrange a start date!

Also ONLINE!

Logan Main Campus

Class begins: M - Th 2 pm - 8 pm \$55*
 Jan 4; Feb 1; March 1 (per month)

Brigham City

Class begins: M W 1 pm - 5 pm \$55*
 Jan 4; Feb 1; March 1 (per month)

Online

Ongoing Register at www.batc.edu \$150*

CSS & JAVASCRIPT I

Learn how to style web pages using in-depth CSS. Prerequisite: Web Design I or equivalent. *Includes a 1-hr lecture and 2-hr lab.*

Logan West Campus

Jan 11 - Feb 17 M W 6 pm - 9 pm ECM2421 \$60*

CSS & JAVASCRIPT II

Learn JavaScript to add interactive features to your web pages. Prerequisite: Web Design I or equivalent. *Includes a 1-hr lecture and 2-hr lab.*

Logan West Campus

Feb 22 - March 24 M W 6 pm - 9 pm ECM2422 \$60*

DIGITAL PHOTOGRAPHY

This course is a basic class designed to teach fundamental techniques and principles for taking, editing, storing, and presenting digital images. The class will focus on camera use, composition, and design principles, but will also cover basic editing practices and online presentation of photos. Computer skills are a prerequisite for this class. Students should have their own digital camera for the class.

Logan Main Campus

Jan 6 - March 10 Wed 5 pm - 7 pm DSN2141 \$85*

DIGITAL VIDEO (MICROSOFT MOVIE MAKER)

Use Microsoft Movie Maker to create a video using your digital photos and short videos, or combine other graphics projects into a video portfolio. Students will complete a project as part of the class.

Brigham City

Jan 6 - Feb 3 Wed 6 pm - 7 pm BDS2041 \$45*

e-COMMERCE OPEN LAB

Students can progress at their own rate on e-Commerce courses that are offered. Some courses have prerequisites before they can be taken. A class instructor is available for questions and to help students understand the curriculum or to help with related projects a student may have.

Logan West Campus

Jan 4 - March 31 M - F 8 am - 2 pm ECM2011
 30/60/90 hrs lab time \$60/\$100/\$130*

*Text and/or supplies may be required

Certificate
 Logan & Brigham City

e-Commerce



The growth of the Internet and the expansion of the World Wide Web have generated a variety of occupations related to the design, development, and maintenance of Web sites and their servers.

Contact Rex at 435.938.0289 to find out more. Day and evening schedules available!

www.batc.edu

EXCEL 2007 (LEVEL I & LEVEL II)

See the Business Software Open-Entry / Self-Paced Schedule on page 7 for dates and times.

GAME GRAPHICS

Develop interactive worlds with custom textures and graphics using the Source game engine from Valve's Half-life 2. WARNING: Students and parents should be advised that some game content used in this class is taken from games with ESRB ratings of T (Teen) and M (Mature). Prerequisite: Good computer skills and an understanding of Microsoft Windows. Contact Callan at 750.3128 for more information.

Logan Main Campus

Jan 5 - March 22 Tues 5 pm - 7 pm DSN2041 \$85*

GENERAL MEDIA DESIGN OPEN LAB

Choose your area of training from Photoshop, InDesign, Dreamweaver, Microsoft Office, and others. Individualized instruction allows students to progress at their own rate or work on individual projects. Previous experience in media design is not required. Contact Callan at 750.3128 for more information.

Logan Main Campus

Jan 4 - March 26 M - F (day) 50 hours day or night DFT2111 \$75*
 M - Th (night)

Brigham City

Jan 6 - March 11 W Th 4 pm - 7 pm BDF2131 \$75*

Certificate
 Logan & Brigham City

Information Technology



Network/Computer systems, data communications, and computer software careers comprise four out of the seven "fastest growing Utah occupations."

Contact Rex at (435) 938-0289.

www.batc.edu

*Text and/or supplies may be required

INTRO TO INFORMATION TECHNOLOGY

Students will gain an understanding of computers including their history, hardware, operating systems, program languages, software, networking, data storage, and system security. Students should recognize why computers are essential to the business community and to apply various technologies that are available to make them more effective.

Logan West Campus IFT2111
 Jan 12 - March 16 Tu W Th 6 pm - 9 pm \$135*

IT OPEN LAB

Students can progress at their own rate on Information Technology courses that are offered. Some courses have prerequisites before they can be taken. A class instructor is available for questions and to help students understand the curriculum or to help with related projects a student may have.

Logan West Campus IFT2101
 Jan 4 - March 31 M - F 8 am - 2 pm
 30/60/90 hrs lab time \$60/\$100/\$130*

*Certificate
 Logan & Brigham City*

Media Design



Acquire skills necessary to layout and design magazines, newspapers, journals, corporate reports, product packaging, marketing brochures, distinctive logos, Internet Web pages, and multimedia projects.

Contact Minette at 750.3109.
www.batc.edu

MAYA

Model and animate in 3D using current industry standard character animation software Maya. This is a basic class with topics including interface, tools, lighting, rendering, and more. Good computer skills and an understanding of Microsoft Windows required.

Logan Main Campus DSN2101
 Jan 5 - March 9 Tues 7 pm - 9 pm \$85*

NETWORKING

Concepts include design, topology, implementation, cabling, connecting network components, signal transmission, and network adapter cards. Prepares student for Network+ Certification exam.

Logan West Campus IFT2131
 Jan 11 - March 19 M - F 8 am - 11 am \$210*

PHOTOSHOP CS4 • BEGINNING

Learn techniques using the full version of Adobe Photoshop CS4. Creation and manipulation of digital and photo images from scanning, photo CDs, or digital cameras will be covered as well as basic techniques for photo retouching and digital illustration. Topics include working with layers, tone and color adjustment, dust and scratch repair, blemish removal, masking, and much more. Textbook required. Contact Ryan at 750.3132 for more info.

Logan Main Campus DSN2011
 Jan 6 - March 10 Wed 6 pm - 8 pm \$85*

*Text and/or supplies may be required

PHOTOSHOP ELEMENTS • BEGINNING DESIGN & LAYOUT

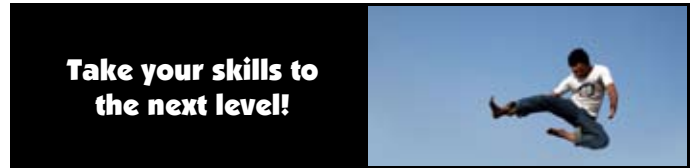
Learn photo correction/enhancement, layout design, resolution, organization, etc. Develop techniques to locate, download, and best utilize digital elements to create dynamite prints. Learn to create your own templates and use brushes to make your pages unique. Must have good computer skills. Contact Emily at 750.3216 for more information.

Logan Main Campus BUS2211
 Jan 4 - Jan 14 M Th 5:30 pm - 8:30 pm \$30
Brigham City BBS2161
 Jan 6 - Jan 15 W F 3 pm - 6 pm \$30

PHOTOSHOP ELEMENTS • ADVANCED LAYOUT DESIGN

Learn tips and techniques to create digital layouts like the pros! Learn to use blending modes, manage fonts and colors, emboss text, utilize styles, and 'stamp' digitally. Learn how to use stock photography and photo enhancing actions! Must have some Photoshop Elements experience. Contact Emily at 750.3216 for more information.

Logan Main Campus BUS2212
 Feb 22, 25 & Mar 1 M Th 5:30 pm - 8:30 pm \$25



PHOTOSHOP ELEMENTS FOR PHOTOGRAPHERS

Learn to use the popular and affordable Photoshop Elements as a tool to take your photography to the next level. Photo correction, editing, and manipulation will be covered, along with techniques specific to photographers. This is not a scrapbooking class.

Logan Main Campus DSN2031
 Jan 6 - March 10 Wed 7 pm - 9 pm \$85

PHP & MYSQL I

Learn to use this powerful server-side scripting language and database to create dynamic web sites. Prerequisite: Must have strong HTML skills. *Includes a 1-hr lecture and 2-hr lab.*

Logan West Campus ECM2241
 Jan 12 - Feb 9 Tu Th 6 pm - 9 pm \$60*

PHP & MYSQL II

This class is a continuation of PHP & MySQL 1 where you will learn advanced skills with this powerful server-side scripting language and database to create dynamic Web sites with object oriented programming. Prerequisite: Must have strong HTML skills. *Includes a 1-hr lecture and 2-hr lab.*

Logan West Campus ECM2238
 Feb 11 - March 11 Tu Th 6 pm - 9 pm \$60*

POWERPOINT 2007 (LEVEL 1 & LEVEL II)

See the Business Software Open-Entry / Self-Paced Schedule on page 7 for dates and times.

*Text and/or supplies may be required

Computers & Software Construction Trades

PROFESSIONAL VIDEOGRAPHY & BROADCAST PRODUCTION I

This is the first of two courses designed to teach the fundamentals of videography and broadcast production. Learn pre-production planning, scriptwriting, camera usage and shooting techniques, and basic editing skills. Broadcast standards and history, live production techniques, and individual and team video projects will be covered.

New!

Logan West Campus ECM2411
Jan 12 - Feb 9 Tu Th 6 pm - 9 pm \$90*

PROFESSIONAL VIDEOGRAPHY & BROADCAST PRODUCTION II

The second of two courses designed to teach the fundamentals of videography and broadcast production. Learn studio and set etiquette and coordination, full production management, post production, and video marketing. Get hands on training in live production, prerecorded broadcast production.

New!

Logan West Campus ECM2412
Feb 11 - March 11 Tu Th 6 pm - 9 pm \$90*

QUICKBOOKS 2008

See the Business Software Open-Entry / Self-Paced Schedule on page 7 for dates and times. QuickBooks 2010 coming soon!

QUICKBOOKS (2008) FOR THE NON-ACCOUNTANT

Learn how to set up and maintain your business using the most-used accounting software, QuickBooks.

Brigham City BBS2411
March 2 - March 25 Tu Th 6 pm - 8 pm \$50*

TEAM GAME DEVELOPMENT

Work as a team to create an exciting 3D/2D game for Internet and console games. Learn game production, design, programming, music, effects, and graphics.

Logan West Campus ECM2361
Jan 11 - March 19 M W F 3 pm - 4 pm \$50*

TEAM WEB SITE DEVELOPMENT

Work as a team to create a full professional Web site. Potential to learn web design graphics, multimedia, and web development programming. Industry tools such as Photoshop, Fireworks, Dreamweaver, Flash, and PHP/MySQL will be used.

New!

Logan West Campus ECM2081
Jan 12 - March 11 Tu Th 3 pm - 4 pm \$30*

WEB DESIGN I (HTML AND CSS)

Design and create captivating, interactive, and user-friendly Web sites using HTML and CSS. *Includes a 1-hr lecture and 2-hr lab.*

Logan West Campus ECM2021
Jan 11 - Feb 17 M W 6 pm - 9 pm \$60*

WEB DESIGN II (FIREWORKS AND DREAMWEAVER)

Learn advanced skills in Web design using Adobe's industry leading tools, Fireworks and Dreamweaver. *Includes a 1-hr lecture and 2-hr lab.*

Logan West Campus ECM2161
Feb 22 - March 24 M W 6 pm - 9 pm \$60*

WIRELESS NETWORKING

CWTS – (Certified Wireless Technology Specialist)
Learn to setup, configure, manage, and secure enterprise-level wireless networks, and the various hardware, software, and tools used in the wireless industry. Students will be able to perform site surveys and learn about installation methods used for setup of both large and small wireless networks. Students will also gain an understanding of radio frequency behavior, terminology, and the wireless fundamentals necessary to be successful in the exciting and rapidly growing enterprise wireless network industry. This course will prepare students for the CWTS Exam to become a Certified Wireless Technology Specialist.

New!

Logan West Campus IFT2151
Jan 12 - March 12 Tu F 6 pm - 9 pm \$100*
Jan 13 - March 11 W Th 11 am - 2 pm \$100*

WORD 2007 (LEVEL I & LEVEL II)

See the Business Software Open-Entry / Self-Paced Schedule on page 7 for dates and times.

Construction Trades

*Certificate
Logan*

Building Technology



Obtain hands-on experience in the actual construction of a custom home; be involved in all phases of custom home building from planning to finish work.

Contact Curtis at 760.1791 for more information.
www.batc.edu

APPRENTICE ELECTRICIAN**

Logan West Campus
Jan 5 - April 14 Tu W 6 pm - 9 pm \$260*

APPRENTICE ELECTRONIC TECHNICIAN OR INDUSTRIAL MAINTENANCE

Logan West Campus
Jan 5 - April 15 Tu W Th 6 pm - 9 pm \$260*

APPRENTICE HVAC

Logan West Campus
Jan 5 - April 15 Tu Th 6 pm - 9 pm \$260*

APPRENTICE MACHINIST

Logan Main Campus
Jan 4 - April 14 M W 6 pm - 9 pm \$260*

APPRENTICE PLUMBING**

Logan West Campus
Jan 5 - April 14 Tu W 6 pm - 9 pm \$260*

***Basic assessment is required for first year apprentice students.*

***Text and/or supplies may be required**

CONTRACTOR PROFESSIONAL EDUCATION CLASSES

These classes are held during breakfast and are 2 hours in length. They are hosted by the local building officials and focus on various subjects and will satisfy the Professional continuing education requirements for trade and contractor licensing.

•Logan West Campus•

Attic Ventilation APP2045
 Feb 2 Tues 8 am - 10 am \$15
 \$20 day of class

Concrete Installations APP2046
 Feb 9 Tues 8 am - 10 am \$15
 \$20 day of class

CODE UPDATES

These classes focus on the State and local building codes and will satisfy the continuing education requirements for trade and contractor licensing.

Partial funding has been provided by the Division of Occupational & Professional Licensing from the 1% Surcharge Funds on all building permits.

•Logan Main Campus•

2009 IPC • Significant Code Changes APP2041
 Feb 19 Fri 8 am - 2:30 pm \$30

2008 NEC • Significant Code Changes Part 1 APP2042
 March 20 Sat 8 am - 2:30 pm \$30

2009 NFPA 70E • Electrical Safety (Arc Flash Training) APP2043
 March 26 Fri 8 am - 2:30 pm \$30

2008 NEC • Significant Code Changes Part 2 APP2044
 March 27 Sat 8 am - 2:30 pm \$30

Register online at www.batc.edu for Code Updates

*Certificate
 Logan*

Cabinetmaking & Millwork



Become a part of the cabinet industry! Learn all phases of cabinet design, construction and millwork while building high quality, beautifully crafted kitchen cabinets. Become employed as a cabinetmaker, millworker, finisher, and/or installer. Contact Eric at 750.3073. www.batc.edu

CABINETMAKING (BEGINNING)

Design, plan, lay out, and construct a project from a selected list. Textbook required, available in the BATC Bookstore.

Logan Main Campus BLD2071
 Jan 5 - March 11 Tu Th 6 pm - 9 pm \$110*

CABINETMAKING (INTERMEDIATE)

Design and build a cabinet with advanced techniques (plastic laminate installation, angle cabinetry, tables, mantels, raised-panel, etc.) Prerequisite: Beginning Cabinetmaking

Logan Main Campus BLD2171
 Jan 4 - March 17 M W 6 pm - 9 pm \$110*

*Text and/or supplies may be required

FLAGGER CERTIFICATION (UDOT-ATSSA)

This course will prepare qualified persons to flag on construction and maintenance projects.

Logan West Campus APP210
 Jan 8 Fri 9 am - 12 pm \$30*
 March 12 Fri 9 am - 12 pm \$30*

Online!

**FORKLIFT OPERATION CERTIFICATION
 (ENGLISH OR SPANISH)**

This online OSHA certified course covers current regulations for the safe operation of a lift truck. Once a student completes the online course they schedule a time with the instructor to do the practical exam. Once both portions are successfully completed they will receive their Forklift Operator Card.

Ongoing Register online at www.batc.edu \$70*

Online!

•10-HOUR OSHA SAFETY TRAINING

Ongoing Register online at www.batc.edu \$30*

30-HOUR OSHA SAFETY TRAINING

A comprehensive safety program designed for anyone involved in the construction industry. Specifically devised for safety directors, foremen, and field supervisors, the program provides complete information on OSHA compliance issues. An OSHA card will be issued upon completion of this course.

Logan West Campus APP2062
 March 1, 2, 3 M Tu W 8 am - 5:30 pm \$350*

**ENERGY EFFICIENCY MANAGEMENT TRAINING AND
 RENEWABLE ENERGY SYSTEMS**

In Utah, demand for energy efficiency and renewable energy installation and service is higher than the number of trained experts and technicians in the state. As Utah works to meet the Governor's energy efficiency and renewable energy goal, Utah will need to train and educate upcoming energy efficiency professionals to meet demand in this industry.

Don't miss this opportunity to develop new skills or upgrade existing skills and knowledge to prepare for a career in this emerging field of energy as a technical professional! Training in Energy Management will be offered, including alternative and renewable energy and its return on investment, an introduction to LEED training, HVAC controls and equipment, and energy audits. Additionally, students will learn about residential and commercial energy analysis, weatherization, and current needs and trends in the energy management industry, including a survey of career opportunities in this exciting field. The course will be offered by Jack Greene, environmental science educator and practitioner.



Logan West Campus
 Jan 7 - March 11 Thurs 6 pm - 9 pm \$50*

*Text and/or supplies may be required

Certificate
Logan

Heavy Equipment Operator

Sponsored by Komatsu



Would you like to work as a Heavy Equipment Operator? There is high demand for qualified operators in the construction industry. Acquire the training and skills needed to start a career in this great paying field. CDL licensure available.

Contact Paul at 770.9904 for more information.

www.batc.edu

HEAVY EQUIPMENT OPERATOR

There is high demand for qualified operators in the construction industry. Acquire the training and skills needed to start a career in this great paying field. Contact Paul at 770.9904 for more information.

Logan West Campus			HEO2011
Jan 4 - March 2	M - F	8 am - 2:30 pm	\$975*
March 4 - April 28	M - F	8 am - 2:30 pm	\$975*

Dental Assisting

Certificate
Logan & Brigham City

Dental Assisting



Become a Certified Dental Assistant (CDA) in our Commission on Dental Accreditation (CODA) **accredited** program. Dental Assisting National Board boasts pay rates for CDAs have risen more than 9 percent in the last two years over non certified assistants. BATC is the only school locally providing CDA level training. Join us today! Contact Cathy at 750.3008.

Prerequisite: CPR

www.batc.edu

Drafting/CAD

AUTOCAD • BEGINNING

The basics of computer aided drafting are presented at a beginning level using AutoCAD 2008. Sketching, multi-view projections, and perspective drawing at the beginning CAD level will be introduced. Previous drafting experience is not required. Textbook required.

Logan Main Campus			DFT2091
Jan 7 - March 11	Thurs	6 pm - 8 pm	\$85*
Brigham City			BDF2011
Jan 6 - March 10	Wed	5 pm - 7 pm	\$85*

*Text and/or supplies may be required

CHIEF ARCHITECT

Put together an entire house plan. Plan development and blueprint requirements will be discussed. Previous drafting experience is not required but is helpful.

Brigham City			BDF2121
Jan 7 - March 11	Thurs	5 pm - 7 pm	\$85*

GENERAL DRAFTING OPEN LAB

Learn software through self-paced, individualized instruction in all areas of computer aided drafting.

Logan Main Campus			DFT2111
Jan 4 - March 26	M - F (day) M - Th (night)	50 hours day or night	\$75*

Brigham City			BDF2131
Jan 6 - March 11	W Th	4 pm - 7 pm	\$75*
Dependant on seat availability			

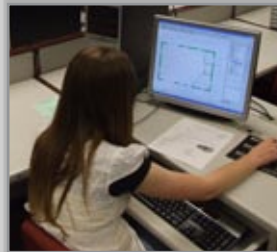
SOLIDWORKS

Terminology, toolbars, menus, basic graphic operations, selecting and moving objects, feature manager, sweeps, lofts, mating parts, and assemblies are some concepts covered. Prerequisite: beginning CAD course or equivalent.

Brigham City			BDF2071
Jan 7 - March 11	Thurs	6 pm - 7 pm	\$85*

Certificate
Logan & Brigham City

Drafting



Technical drawings and plans are needed to build everything from manufactured products such as toys, toasters, industrial machinery, and spacecraft to structures such as houses, office buildings, and gas pipelines.

Logan: Contact Callan at 750.3128

Brigham: Contact Myrick at

734.0623, Ext. 42

www.batc.edu

Health Professions

OPEN-ENTRY / SELF-PACED

DRUG DOSAGES & CALCULATIONS - CLASS SIZE LIMITED

M - F	12:30 pm - 2:30 pm	\$67*
M W F	12:30 pm - 2:30 pm	\$67*

NURSE AIDE TRAINING (CNA) - CLASS SIZE LIMITED

M - F	9:30 am - 11:30 am	\$450*
M Tu Th	9:30 am - 11:30 am	\$450*

MEDICAL TERMINOLOGY

M W F	12:30 pm - 2:30 pm	\$109*
-------	--------------------	--------

*Text and/or supplies may be required

DRUG DOSAGES & CALCULATIONS

Learn the math necessary to draw up IV medications, prepare injections, and other exciting drug-related calculations. Decimals, fractions, percentages, and conversions will also be covered. This class is a prerequisite for the BATC Practical Nursing Program.

Logan Main Campus			HTH221
Jan 13 - March 17	Wed	6 pm - 9 pm	\$67*
Open-Entry	M - F	12:30 pm - 2:30 pm	
Open-Entry	M W F	12:30 pm - 2:30 pm	\$67*
For open-entry course , contact Todd at 435.750.3060 to put your name on the waiting list.			
Brigham City			BHT2031
Jan 12 - March 18	Tu Th	6 pm - 9 pm	\$67*

*Certificate
Logan*

Medical Assisting



Would you like to work in a doctor's office or medical clinic? Then Medical Assisting is for you! This program is accredited by the Commission on Accreditation of Allied Health Education Programs (**CAAHEP**). Day and evening schedules available! Contact the instructors at 750.3047 for more information.
www.batc.edu

*Certificate
Logan*

Medical Coding



Learn to appropriately code patients' diagnosis, procedure, and medical information for insurance purposes in coding facilities, physicians' offices, hospitals, and clinics. Curriculum qualifies students to take **national certification exam**. See course information below.
www.batc.edu

MEDICAL CODING

Prepare for employment as a medical coder/medical biller. Completion of the program will qualify the student to take a national certification exam. Contact Adrienne at 750.3177 for additional information. **An academic assessment is required before enrollment**; contact the Assessment Center at 750.3188. Prerequisite: Medical Terminology.

Logan Main Campus			
Open-Entry	M Tu Th	5 pm - 9 pm	\$1.40/hr*

*Text and/or supplies may be required

NURSE AIDE TRAINING (CNA)

Would you like to become a vital part of the nursing team and learn the basic procedures and practices required for bedside care? Then consider becoming a CNA. This class is required before testing and applying for State of Utah certification. **A non-refundable \$50 background check fee is required for clinical clearance. Background check must be complete before class begins. Please Note: Students CANNOT miss more than two class periods. Prerequisite: CPR (proof of CPR certification is required at the time of registration.)**

Logan Main Campus			HTH204
Jan 4 - March 24	M W	6 pm - 9 pm	\$450*
Jan 5 - March 24	Tu W	6 pm - 9 pm	\$450*
Open-Entry	M - F	9:30 am - 11:30 am	\$450*
	M Tu Th	9:30 am - 11:30 am	\$450*

For **open-entry (day) courses**, contact Kandace at 435.750.3101 to put your name on the waiting list, (MUST SHOW **COMPLETION OF CPR BEFORE YOU CAN BE PUT ON THE WAITING LIST**). For **evening courses or the high school program**, contact Butch Perry at 435.750.3149.

Brigham City			BHT2011
Jan 4 - March 24	M W	6 pm - 9 pm	\$450*

*Certificate
Logan*

Medical Office Administration



Learn skills to run the administrative "front end" of a medical facility including office management, medical records management, billing and collection, insurance basics, and customer relations.
www.batc.edu

See course information on this page.

MEDICAL OFFICE ADMINISTRATION

Become a Utah State Endorsed Medical Office Administrative Assistant. **Medical Terminology is a prerequisite.** Both Medical Office I (Information Management) and Medical Office II (Administrative Procedures) must be completed to take the Utah State Board of Education exam. **A non-refundable \$50 background check fee is required.**

Logan Main Campus			
Open-Entry	M W F	10:30 am - 2:30 pm	\$1.40/hr*
Contact Kerri Sales at 750.3013 for a start date.			

Also Online!

MEDICAL TERMINOLOGY

Learn to speak the language of medicine. Acquire a large vocabulary using word roots, prefixes, suffixes, and combining forms while preparing for a career in the medical field. This course is a prerequisite for most Health Science classes and the BATC Practical Nursing Program.

Logan Main Campus			HTH207
Jan 12 - March 18	Tu Th	7 pm - 10 pm	\$109*
Jan 12 - March 18	Tu Th	12:30 pm - 3:30 pm	\$109*
Open-Entry (begins each Mon.)	M W F	12:30 pm - 2:30 pm	\$109*
Online			
Ongoing		Register at www.batc.edu	\$129*
Brigham City			BHT2021
Jan 12 - March 18	Tu Th	6 pm - 9 pm	\$109*

*Certificate
Logan*

Pharmacy Technician



The job growth for pharmacy technicians is expected to increase by an astounding 32% until 2016 according to the Bureau of Labor Statistics (BLS). See course information below.

www.batc.edu

PHARMACY TECHNICIAN

Would you like a fast-paced, interesting career in a pharmacy setting? Pharmacy Technicians assist pharmacists in the packaging and distribution of medication. A national certification exam is required upon successful completion of the program. An academic assessment is mandatory before enrollment; contact the Assessment Center at 750.3188. Complete assessment now to secure your place on the waiting list! **A non-refundable \$50 background check fee is required for clinical clearance.** Contact Melissa at 750.3196 for questions concerning the program or waiting list.

Logan Main Campus

Sept 2010	Tu W Th	6 pm - 9 pm	\$704*
-----------	---------	-------------	--------

PHLEBOTOMY TRAINING

Learn to collect and draw blood samples for clinical testing in the health facility laboratory. Upon completion of this training, students will be prepared to apply for national certification. Students must be 18 years of age to enroll. **A non-refundable \$50 background check fee is required.** The text, Phlebotomy packet, lab coat, and safety goggles must be purchased from the BATC Bookstore prior to the first night of class.

Logan Main Campus

Jan 12 - March 18	Tu Th	10:30 am - 12:30 pm	HTH2181 \$256*
Jan 13 - March 17	Wed	5 pm - 9 pm	\$256*

Brigham City

Jan 4 - March 22	Mon	5 pm - 9 pm	BHT2041 \$256*
------------------	-----	-------------	-------------------

*Certificate
Logan*

Nursing - PN



With the world population living longer and needing more care, the health care field is one of the best places to get a job, and will likely stay that way for many years to come. The Practical Nursing Program at BATC is fully accredited through the **NLAC** (National League for Nursing Accreditation Commission). To find out more about starting your nursing career, please contact Becky at 750.3140 or Lisa at 750.3054.

www.batc.edu

*Text and/or supplies may be required

*Certificate
Logan*

Veterinarian Assistant / Pre-Vet Tech



Do you love caring for all kinds of creatures, from poodles to platypuses? Combine your love of animals with skills for a rewarding career – make your passion your profession! See course information on this page. Contact Susan at 435.753.4708, Ext. 207 to learn more.

www.batc.edu

VETERINARIAN ASSISTANT / PRE-VET TECH

Assist in nursing care, radiology, animal restraint, routine lab procedures, blood collection, catheterization, dental cleanings, administration of vaccines, physical exams, etc. An academic assessment is required before enrollment; contact the Assessment Center at 750.3188. Complete assessment now to secure your place on the waiting list! **A non-refundable \$50 background check fee is required for clinical clearance.** CPR fee required. Clinical times vary. Contact Susan at 753.4708, Ext. 207 for questions concerning the program or waiting list.

Logan West Campus

Open-Entry	M - F	9 am - 12 noon	\$1.40/hr*
------------	-------	----------------	------------

Manufacturing

*Certificate
Logan*

Electronics



Communication technologies are rapidly changing. Learn to use science, technology, and problem-solving skills to design, construct, and maintain products, services, and information systems.

Contact Ed at 770.0494.
www.batc.edu

ELECTRONIC ASSEMBLY TECHNICIAN

Covers Electronics Fundamentals, Assembly and Soldering, and Practical Troubleshooting. IPC national certifications will be earned. An academic assessment is required before enrollment; contact the Assessment Center at 750.3188. Contact Ed at eball@batc.edu or 770.0494 with any questions.

Logan West Campus

Open-Entry	M & F (8 am - 2 pm)	Flexible 10 - 30	\$1.40/hr*
	Tu W Th (8 am - 9 pm)	hours per week	

*Text and/or supplies may be required

ELECTRONIC INSTRUMENTATION MECHANIC TECHNICIAN FOR HILL AFB

This 600 hour certificate can usually be completed in three quarters and meets Hill AFB requirements. It is also useful for employment at many other related companies. This program covers Electronic Fundamentals, Assembly and Soldering Certifications, Communications Circuits, Practical Electronics Troubleshooting, and Computer Literacy. A free academic assessment is required before enrollment; contact the Assessment Center at 750.3188.

Logan West Campus

Open-Entry M - F (8 - 2pm) Flexible 10 - 30 \$1.40/hr*
 Tu W Th (8 am - 9 pm) hours per week

ELECTRONIC TECHNICIAN OPEN LAB

Modular lab created to help those in industry who desire self paced course-work and hands-on training in Electronic Fundamentals, Communications Circuits, Practical Electronics Troubleshooting, Instrumentation Circuits, Digital Circuits, Programmable Logic Devices, etc. A free academic assessment is required before enrollment; contact the Assessment Center at 750.3188. Contact Ed at 770-0494 or eball@batc.edu with questions.

Logan West Campus

Jan 4 - March 26 M & F (8 am - 2 pm) Flexible 10 hours \$199*
 Tu, W, Th (8 am - 9 pm) per week

Online!

FORKLIFT OPERATION CERTIFICATION (ENGLISH OR SPANISH)

This online OSHA certified course covers current regulations for the safe operation of a lift truck. Once student completes the online course they schedule a time with the instructor to do the practical exam. Once both portions are successfully completed they will receive their Forklift Operator Card.

Ongoing Register online at www.batc.edu \$70*

HANDLING OF DANGEROUS GOODS

This comprehensive, two-day class covers all aspects of shipping dangerous goods by air, including general familiarization and fundamentals, identification, classification, packaging, marking, labeling, and documentation. Designed not only for initial training but for recurrent training as well. (*Radioactive materials training is not included in this class.*)

Logan West Campus

March 29 & 30 M Tu 8 am - 5 pm \$350*

New!

MSHA TRAINING

• Logan Main Campus •

Lunch, text, and materials provided

NEW MINER TRAINING APP209

March 4 & 5 Th F 8 am - 4:30 pm \$170

ANNUAL REFRESHER

March 4 Thurs 8 am - 4:30 pm \$90

*Text and/or supplies may be required

IPC SOLDERING CERTIFICATIONS

Logan West Campus

- J-STD-001 Requirements for Soldered Electronic Assemblies (4 days)
- IPC-A-610 Acceptability of Electronic Assemblies (4 days)
- IPC-7711A\7721A Rework and Repair of Electronic Assemblies (2weeks)
- 8-hour recertification of any of the above (1 day)

Each module is \$145. Recertification is \$75. Day and evening times are available with new classes starting every month. Call Ed at 770.0494. All modules include lead-free, surface mount, and thru-hole soldering.

REFRIGERATION (BEGINNING)

Logan West Campus

Jan 5 - April 13 Tues 6 pm - 9 pm APP2171
 \$130*

REFRIGERATION (INTERMEDIATE)

Logan West Campus

Jan 7 - April 15 Thurs 6 pm - 9 pm APP2172
 \$130*

*Certificate
Logan*

Industrial Automation



Companies throughout the world are rapidly automating their manufacturing processes in order to be more competitive in the global economy. Companies need skilled technicians to install, maintain, and repair electromechanical equipment.

Contact Ed at 770.0494.
www.batc.edu

New!

BASIC INDUSTRIAL AUTOMATION TECHNICIAN (LEVEL 1 & 2)

Level 1 is a 300-hour certificate often completed in one quarter. Level 2 takes 600 hours. Topics include Welding, Industrial Safety, Automation Maintenance Basics, Fluid Power Hydraulics and Pneumatics, Industrial Mechanics and Alignment, Electronics Fundamentals, Electrical Motor Controls, and Programmable Logic Controllers (PLCs). A free pre-assessment is required; contact the Assessment Center at 435-750-3188. Contact Ed at 770-0494 or eball@batc.edu with questions.

Logan West Campus

Open-Entry M & F (8 am - 2 pm) Flexible 10 - 30 \$1.40/hr*
 Tu W Th (8 am - 9 pm) hours per week

INDUSTRIAL AUTOMATION OPEN LAB

Modular lab created to help those in industry who desire self-paced course-work and hands-on training in PLCs, Fluid Power, Motor Controls, Industrial Drives and Alignment, Mechanical Maintenance, Electronics, etc. An academic assessment is required through our Assessment Center (750.3188). Contact Ed at 770.0494 or eball@batc.edu with questions.

Logan West Campus

Jan 4 - March 26 M & F (8 am - 2 pm) Flexible 10 hours IDM2211
 Tu, W, Th (8 am - 9 pm) per week \$199*

*Text and/or supplies may be required

MECHATRONICS

This new program combines core courses from Electronics Technology and Industrial Automation to create a unique certification and skill set that many employers are looking for in the world of automated manufacturing. Join us in this exciting field of study and prepare for a rewarding career. A free academic assessment is required before enrollment; contact the Assessment Center at 750.3188. Contact Ed at 770.0494 or eball@batc.edu with questions.

Logan West Campus

Open-Entry	M & F (8 - 2 pm)	Flexible 10 - 30	\$1.40/hr*
	Tu W Th (8 am - 9 pm)	hours per week	



Certificate Logan

Machining Technology



A US survey found 80 percent of manufacturing employers had a serious problem finding qualified machinists for employment.

Contact Jerold at 750.3053 to find out how to start your career in this dynamic field.
www.batc.edu

INSPECTION 2

A continuation of the Introduction to Inspection. The class will continue with GD&T, math, standard measuring equipment and an introduction to CMM. Course prerequisites are Introduction to Inspection, or equivalent training. Call Jerold at (435) 750-3053 for more information.

Logan Main Campus

Jan 11 - March 24	M W	6 pm - 9 pm	MSO2251 \$125*
-------------------	-----	-------------	-------------------

MACHINING TECHNOLOGY BASICS

This class is an introduction to the world of machining. Explore the possibilities of a new career. Training will cover measuring, power band saws, basic mills, and basic lathe operations.

Logan Main Campus

Jan 11 - March 24	M W	6 pm - 9 pm	MSO2031 \$125*
-------------------	-----	-------------	-------------------

MACHINING • INTERMEDIATE

This course is a continuation of Machining Technology Basics. It covers single point threading, taper turning, knurling, boring, and EZ-Trax programming. Prerequisites: Machining Technology Basic or one year of manual machining experience.

Logan Main Campus

Jan 11 - March 24	M W	6 pm - 9 pm	MSO2011 \$125*
-------------------	-----	-------------	-------------------



**Check out the World
Record Winning Barstool
Racer on page 23!**

*Text and/or supplies may be required

MASTERCAM X4 WORKSHOP (1)

Get started in the world of Computer-Aided Design/Computer-Aided Machining. CAD/CAM software uses CAD drawing tools to describe geometries used by the CAM portion of the program to define a toolpath that will direct the motion of a CNC machine tool to machine the exact shape that was drawn. You will be using one of the leading CAD/CAM programs in the world, "Mastercam X4". Basic design, geometry, contouring, pocketing, drilling, toolpaths, and posting will be covered. This is a five week course, after which you may choose to continue on to the second workshop.

Logan Main Campus

Jan 12 - Feb 11	Tu Th	6 pm - 9 pm	MSO2131 \$95*
-----------------	-------	-------------	------------------

MASTERCAM X4 WORKSHOP (2)

A continuation of the first workshop. Start by customizing configuration files, machine definition, post, toolbars, 3D geometry creation, toolpathing, surface creation, surface toolpathing, solid creation, and 4th axis toolpathing.

Logan Main Campus

Feb 16 - March 18	Tu Th	6 pm - 9 pm	MSO2132 \$95*
-------------------	-------	-------------	------------------

Certificate Logan & Rich County

Welding Technology



It's a great time to be a welder—the global boom in industrial manufacturing has caused skilled welders to be in greater demand than ever. Companies can't find enough of them. The welding industry continues to offer excellent wages and benefits.

Contact Randee at 750.3041.
www.batc.edu

BLACKSMITHING

Learn basic blacksmithing skills and fundamentals in this 30-hour class. Students will make several tools and projects to take home.

Logan Main Campus

Jan 13 - March 17	Wed	6 pm - 9 pm	WLD2041 \$150*
-------------------	-----	-------------	-------------------

WELDING • BEGINNING

Learn skills in Oxyacetylene Welding, Cutting, Shielded Metal Arc (Stick), Gas Metal Arc (Mig) Welding, and maintenance welding skills.

Logan Main Campus

Jan 11 - March 24	M W	6 pm - 9 pm	WLD2011 \$125*
-------------------	-----	-------------	-------------------

WELDING CERTIFICATION & PROCESSES

Learn over a dozen welding processes with emphasis on welder certification of mild steel, aluminum, and stainless. Students can choose which processes they want to certify in.

Logan Main Campus

Jan 12 - March 18	Tu Th	6 pm - 9 pm	WLD2031 \$125*
-------------------	-------	-------------	-------------------

WELDING INSPECTION

Covers topics relating to the AWS Certified Welding Inspector (CWI) exam.

Logan Main Campus

Jan 12 - March 16	Tues	7 pm - 10 pm	WLD2081 \$150*
-------------------	------	--------------	-------------------

Public Service

EMERGENCY SERVICES - CONTINUING MEDICAL EDUCATION (CME)

This provides an opportunity for individuals to receive up to 20 hours of continuing medical education. Students are provided a punch card, which allows five, four-hour visits to the current EMT classes. Call John at 512.3242 for dates and topics of classes. Punch card (\$28) is good for one year.

EMERGENCY FIRST RESPONDER

This course presents an exciting opportunity to develop emergency medical skills and knowledge that will enable you to assist people who have sustained an accidental injury or who are suffering from a sudden illness or medical problem. Cost includes a three-year certification, textbook, workbook, bandage pack, blood pressure kit, T-shirt, and CPR certification fee.

Ongoing Register online at www.batc.edu EMS2081 \$350

EMERGENCY MEDICAL TECHNICIAN (EMT) - BASIC

Learn to respond to emergency calls and provide efficient and immediate care to the critically ill and injured including transport to a medical facility. Prepares you for Utah State Certification. Cost includes student handbook, textbook, supplies, class T-shirt, and all applicable certification fees. Students must have Healthcare Provider CPR certification or equivalent as well as documentation of a current TB test within the last 12 months.

Logan West Campus EMS2011
March 8 - May 26 M W F 6 pm - 10 pm \$700

EMERGENCY MEDICAL TECHNICIAN (EMT) - INTERMEDIATE

Prerequisite: EMT Basic

Logan West Campus EMS2021
Jan 5 - March 2 Tu Th 6 pm - 10 pm \$500

Certificate
Logan

Fire & Rescue Services



Fires killed more Americans than all natural disasters combined. An estimated 1.6 million fires were battled in 2007 according to the US Fire Administration. Develop skills used to save lives and property in this disciplined, stressful, and team-oriented environment.

Contact Bryan at 770.1626.
www.batc.edu

FIREFIGHTER RECRUIT CANDIDATE ACADEMY

Earn your basic state fire certifications and begin your career as a professional firefighter. Students will use the training facility practicing hands-on skills including live fire evolutions, vehicle extrication, and firefighter survival. Graduates will receive a firefighter RCA certificate that will give them the edge when competing for jobs in the fire service. Prerequisite: Introduction to Fire and Rescue Services – Online. Contact Bryan at 435.770.1626 or Jeremy at 435.994.1947 for more information.

Logan West Campus
Aug 2010 Tu W Th / Sat 4-10 pm / 8-5 pm \$2,047.60*

FIRST AID AND CPR RE-CERTIFICATION

•**Section 1:** Register online at www.americanheart.org for update material and the written exam.

Online!

•**Section 2:** Register at BATC (\$10) and call 512.3242 to schedule practical exam.

INTRODUCTION TO FIRE AND RESCUE SERVICES

An introduction to the many components of the modern fire department's responsibilities including: fire suppression, prevention, public education, emergency medical service, hazardous materials response, and urban search and rescue. This class must be completed before starting the Recruit Candidate Academy, for questions on the academy contact Bryan at 770.1626 or Jeremy at 994.1947.

Online!

Online FIR2291
Ongoing Register online at www.batc.edu \$150

HEALTHCARE PROVIDER (CPR)

Professional level required for EMT program and for students in need of AED and two-man certification. Two-year certification through the American Heart Association. Must be registered one week prior to class.

Logan West Campus EMS203
Jan 6 or Jan 25 or Feb 10 or Feb 24 or 8 am - 12 pm \$40
March 18 or March 30
Jan 6 or Jan 11 or Jan 13 or Jan 25 or Feb 3 6 pm - 10 pm \$40
or Feb 10 or Feb 17 or Feb 24 or March 11 or
March 18 or March 25

Brigham City
Jan 7 or Feb 4 or March 4 6 pm - 10 pm \$40



The American Heart Association strongly promotes knowledge of and proficiency in CPR. These courses are not sponsored by the AHA. Fees charged do not represent income to the AHA

Certificate
Logan

Police Academy



Cache Valley is one of the safest places to live. Join the police academy and learn how to enforce laws and protect life and property in our community. Academic assessment given **April – October** is required prior to registering and receiving background information. Registration and background check must be completed by **November 2010**. Questions? Call Michelle at 750.3191.
www.batc.edu

“Our instructors in the Police Academy showed a passion for what they do. They took pride in teaching us correct principles and gave us the tools we need to be successful!”

-Graduate

*Text and/or supplies may be required

ARE YOU IN DEMAND In Today's Job Market?

Job security? It has become a bit of a professional relic. It existed at one time — your parents or grandparents can attest to it. You may not have witnessed it firsthand, but the stories they tell are fascinating. If you showed up on time, worked hard, and delivered results, you didn't worry about your job. Then the world changed and workers realized they could be gone tomorrow. It sounds a bit like a disaster movie, but it's the truth. You might think your job's pretty safe, and chances are your hunch is right, but you probably wouldn't bet your life savings on it.

Since the recession began in December 2007, 7.6 million jobs have been lost in the United States according to the most recent data from the Bureau of Labor Statistics (as of Sept. 2009). Unfortunately, no one can guarantee a surefire way to keep the job you love forever. What we do know is education augments and complements your current knowledge. Education is your personal investment for a secure future.

“BATC has helped me to discover a new career that I enjoy. I'm confident in the skills I've acquired and know I'm a more valuable asset to my employer because of my training.”
— Jared Glenn



If past experience is any guide, the economy will eventually follow a kind of inverted gravitational logic: What goes down must come up. The good news ... today's outlook is rosier than it was 12 months ago. We're certainly still feeling the effects of the economic turmoil, but the economy's not in a standstill despite what you might believe. Even though the headlines contain news of companies in trouble, there are in-demand professions, even in a slow economy. Plenty of employers across various industries are still hiring, and they need good workers right now. But, employers don't just want new workers; they want well trained, dedicated ones! So, whether you are experiencing unemployment, planning for something unexpected, looking for a career change, or training for your future, education increases your opportunity, security, and diversity. Now is the time to invest in your future by training for your career of tomorrow.

“It was scary to lose my job and find myself unprepared for today's jobs. At BATC I've gained valuable, in-demand skills and the confidence I need to succeed.” — Lola Bott



Not sure where to start? Become an informed consumer: know the projected employment numbers, or the quantity of jobs in a given occupation or industry, it will help you identify an industry with large growth potential as well as those with no expected job growth or one that's projected to decline in the future. The Bureau of Labor Statistics, Utah's Division of Workforce Services, and other Internet resources provide good information on existing and future opportunities in high-growth occupations.



"BATC is a great asset to the community and a wonderful place for an adult to go back to school and learn an employable trade."
— Suzanne Bingham

To help you get started, we've provided research links on our Web site at

www.batc.edu



Your 'Bridgerland' Experience

Bridgerland Applied Technology College (BATC) offers career training that may vary from the traditional educational experiences you have had. The "hands-on, competency-based" approach to learning at BATC has been proven to increase knowledge, understanding, personal motivation, and career success. Instructors do not just lecture and students do not just take tests. Our "hands-on, competency-based" instruction simulates the workplace where you will learn how to solve problems and find answers as well as master new career skills. Competency-based education allows the focus to be on you, the learner, rather than on seat time; the self-paced nature removes the pressure of keeping up with the class. This learning environment provides you time to practice and master each skill set while receiving one-on-one feedback from an industry professional. You can be assured the skills you learn are current and valuable. All of our programs are industry driven and are reviewed annually by local employers ensuring the skills you learn are current with industry standards giving you a competitive edge in the workforce.

"I've been out of school 30 years. All the instructors have been so patient in helping me achieve my goals. It's never too late to shoot for your dreams!"

— Paul Wood



IN DEMAND

According to MSN Careers (msn.careerbuilder.com) the **TOP OCCUPATIONS** for growth are...

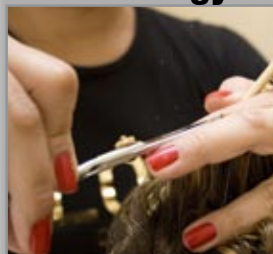
1. **REGISTERED NURSES**
Avg Salary: \$59,730 • Growth: 23%
2. **RETAIL SALESPEOPLE**
Avg Salary: \$23,940 • Growth: 12%
3. **CUSTOMER SERVICE REPS**
Avg Salary: \$30,400 • Growth: 25%
5. **OFFICE CLERKS**
Avg Salary: \$25,200 • Growth: 13%
7. **HOME HEALTH AIDES**
Avg Salary: \$20,100 • Growth: 49%
10. **NURSING AIDES**
Avg Salary: \$22,960 • Growth: 18%
11. **BOOKKEEPING/ACCTG CLERKS**
Avg Salary: \$31,780 • Growth: 12%
14. **ADMINISTRATIVE ASSISTANTS**
Avg Salary: \$39,160 • Growth: 15%
20. **TRUCK DRIVERS**
Avg Salary: \$36,320 • Growth: 10%
22. **SECURITY GUARDS**
Avg Salary: \$23,620 • Growth: 17%
23. **CARPENTERS**
Avg Salary: \$39,930 • Growth: 10%
25. **MEDICAL ASSISTANTS**
Avg Salary: \$27,190 • Growth: 35%
28. **NETWORK SYSTEMS (IT)**
Avg Salary: \$67,460 • Growth: 53%

Service Professions

Cosmetology

*Certificate
Brigham City*

Cosmetology



Learn skills and become licensed to provide specialized beauty services to help your clients look and feel their best. This program provides a wide variety of personal appearance careers to choose from:

- **Basic Esthetician (see below)**
- **Cosmetology/Barbering**
- **Cosmetology/Barbering Instructor**
- **Master Esthetician (see below)**
- **Nail Technician (see this page)**

www.batc.edu

“My instructors in the Cosmetology Program really made me feel like I could succeed. They always helped me and answered my questions.”

-Graduate

*Certificate
Brigham City*

Basic & Master Esthetics



Become a Skin Care Specialist with a wide range of career opportunities from day spas and salons, to cruise ships and destination resorts, to the medical practices of dermatologists and plastic surgeons.

See course information below and/or visit www.batc.edu

BASIC OR MASTER ESTHETICS

Learn both the theory and practical skills necessary to meet state licensing requirements. Students must purchase additional books and supplies; payment plan is available for tuition. Students must be 18 or older. Students interested in Master Esthetics must possess a cosmetology license or basic esthetician license. Call Vanessa at 435.734.0614, Ext 15, for a start date!

Brigham City

Basic Esthetics (600 hours)

Open-Entry	M - Th	8 am - 1:30 pm	\$1500 apprx.
Open-Entry	M - F	8 am - 1:30 pm or 2:30 pm	\$1500 apprx.

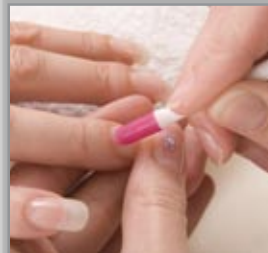
Master Esthetics (600 hours)

Open-Entry	M - Th	8 am - 1:30 pm	\$1500 apprx.
Open-Entry	M - F	8 am - 1:30 pm or 2:30 pm	\$1500 apprx.

*Text and/or supplies may be required

*Certificate
Brigham City*

Nail Technician



Manicures and pedicures are no longer for the wealthy! Our hands and feet say a lot about who we are. Become a technician who enjoys providing luxurious experiences for clients all over the world. Call Vanessa at 435.734.0614, Ext 15, for more information.

www.batc.edu

NAIL TECHNICIAN

This 300-hour program offers theory and practical skills necessary to meet state licensing requirements. Students must purchase additional books, supplies, and nail product available at the Brigham City Bookstore. Contact Vanessa at 435-734-0614 Ext. 15 for more information.

Brigham City

Feb 22 - June 24

M - Th

3 pm - 8 pm

BCS2011

\$500

Culinary Arts/Meat Cutting

*Certificate
Logan*

Culinary Arts



Food service is the third largest employer in the nation and 5th in Cache Valley for projected growth. Become part of the culinary world and test your skills in our student-run kitchen and cafeteria.

Contact John at 750.3022 or Rex at 750.3237 for more information.
www.batc.edu

FOOD SERVICE MANAGER CERTIFICATION

All businesses selling food to the public in Utah must have a trained food service manager certification. Contact Rex at 750.3237 for more information.

Logan Main Campus

Full course: \$150 • Re-certification: \$75

*Certificate
Logan*

Meat Services



According to DWS — in Cache Valley, Meat Service careers are among the top 10 careers with the most openings (2006-2016). Learn skills to cut, trim, and prepare carcasses and consumer-sized portions of meat for sale in wholesale, retail, or food service establishments.

Contact Sam at 750.3112.
www.batc.edu

*Text and/or supplies may be required

Fashion

Certificate
Logan

Fashion Merchandising



The fashion industry is global and offers incredible opportunities for students who love fashion and want to make a career of buying, product development, management, or fashion marketing. A merchandiser is involved in every stage of the process from design to sales. Logan: Contact Colette at 750.3236. www.batc.edu/programs.html



FASHION TRENDS - ALL NEW PLEATED BAG!

Students will learn the basics of sewing while constructing a fun fabric bag combining different prints of fabric. Contact instructor for fabric requirements or kits will be available for \$15.

Logan Main Campus FSM2091
Jan 20 Wed 5:30 pm - 9:30 pm \$10



FASHION ACCESSORIZING - CROCHET NECKLACE

Students will discover how to create a fashionable necklace using the art of wire crocheting. No need to know how to crochet! Students will also learn basic beading skills. **Tools and supplies will be provided.**



Logan Main Campus FSM2101
Feb 4 Thurs 5:30 pm - 8 pm \$25

FASHION TRENDS - VINTAGE APRONS

Learn some basic sewing tips while making a "vintage" style apron in a fun, one night class. This over the shoulder apron is perfect for your home cooking or it also makes a great gift idea! All materials and equipment will be provided.

Logan Main Campus FSM2151
Feb 10 Wed 5:30 pm - 9:30 pm \$25

Interior Design

INTERIOR DESIGN PRINCIPLES - DAY OF DESIGN **EVENT!**

This informative and fun seminar includes many professional, experienced, and well-known experts who will present workshops on a variety of interior design and fashion topics. Participants will choose four info-sessions to attend throughout the day. A light lunch will be provided. Plan to attend, bring a friend, and enjoy the day! See ad on back page.

Logan Main Campus INT2011
Jan 30 Sat 9 am - 1:30 pm \$15
(\$20 after Jan 26)

*Text and/or supplies may be required

Certificate
Logan

Interior Design



Are you creative, imaginative, and artistic? Learn how to combine design knowledge with your aesthetic vision using color, texture, space, furniture and décor to meet the needs of any client.

Contact Heidi at 750.3067 for more information.

www.batc.edu



INTERIOR DESIGN PRINCIPLES - CREATING ART

Add personality and spark to any interior space by using wall art. Learn a variety of techniques including stencil, texture, and collage. Bring any size canvas to create your own masterpiece; paint supplies will be provided.



Logan Main Campus INT2231
March 17 - March 25 W Th 6 pm - 8 pm \$18*

INTERIOR DESIGN PRINCIPLES - FAUX FINISHING

Learn techniques of some of the most popular types of finishes used on anything from walls to home accessories. Use techniques such as rag rolling, marbling, leather finish, wood grain, patina, aging, and crackling. There will be step-by-step instruction and hands-on practice.

Logan Main Campus INT2011
Feb 4 - March 11 Thurs 6 pm - 8 pm \$25*

INTERIOR DESIGN PRINCIPLES - KITCHEN PLANNING

Ease planning frustrations, this course will provide information about product options and construction quality with an emphasis on plan layout.

Logan Main Campus INT2151
March 2 - March 23 Tues 6pm - 8 pm \$20*

INTERIOR DESIGN PRINCIPLES - SPACE PLANNING

Need ideas on how to make better use of the space? Learn how to arrange furniture in a room and ways to make a space more functional, feel more welcoming-a place everyone wants to be.

Logan Main Campus INT2131
Feb 6 - Feb 20 Sat 10 am - 12 pm \$18*

INTERIOR DESIGN PRINCIPLES - USING FENG SHUI

Feng Shui is an ancient Chinese practice used in interior designs believed to balance the energies of any given space to assure good harmony and balance. Learn the principles and techniques to make your home more harmonious and enjoyable.

Logan Main Campus INT2241
Jan 14 - Jan 28 Thurs 6 pm - 8 pm \$18*

*Text and/or supplies may be required

Real Estate

The Bridgerland Applied Technology College Real Estate Program and its instructors are licensed by the Utah Division of Real Estate.

Certificate
Logan

Real Estate



According to the National Association of Realtors, 81-84 percent of people utilize a real estate professional in the purchase or sale of a home. Even in the economic slowdown, the housing sector contributed nearly \$2.1 trillion to the national economy in 2007. See class information below.

www.batc.edu

Also Online!

REAL ESTATE

Utah Department of Workforce Services ranks real estate agent as a five-star job. Five star occupations have the "strongest employment outlook and the highest wages." This 120-hour, state approved, pre-licensing class is designed to not only prepare you for the Utah & National Real Estate Agent tests but also a rewarding career in the ever-growing real estate industry. Questions? Contact Tyson at 750.3245.

Logan Main Campus				REA2011
Jan 11 - May 5	M W	6 pm - 10 pm		\$400*
Online				
Ongoing		Register at www.batc.edu		\$450*

Transportation Professions

Certificate
Logan

Auto Collision



According to the Automotive Service Association, collision repair is nearly a \$30-billion a year industry. Join this fully ASE (Automotive Service Excellence) certified program and earn nationally recognized I-CAR training points. Contact Kevin at 750.3032.

www.batc.edu

AUTO UPHOLSTERY (BEGINNING)

Learn techniques for recovering and restoring car seats, headliners, door panels, carpet, etc.

Logan Main Campus				ABY2171
Jan 6 - March 10	Wed	6:30 pm - 9:30 pm		\$90*

*Text and/or supplies may be required

Certificate
Logan & Rich County

Automotive Service



U.S. vehicle owners spend nearly \$150 billion each year to service, repair, and equip their motorized vehicles. Become a well-trained technician learning the latest technology in this NATEF (National Automotive Technicians Education Foundation) certified program. Contact Mike at 750.3017.

www.batc.edu

"I was very impressed with BATC and the Automotive Service Program. It was great to learn from instructors who have worked in the field and are very knowledgeable."

-Graduate

SAFETY INSPECTION

Official UHP training course. Must be 18 years old and have a valid drivers license to enroll.

Logan Main Campus				AUM232
Jan 11, 13, 14	M W Th	6 pm - 10 pm		\$90
March 1, 3, 4	M W Th	6 pm - 10 pm		\$90

SAFETY INSPECTION • Heavy Truck & Bus

Official UHP training course. Must be 18 years old and have a valid drivers license to enroll.

Logan Main Campus				AUM2331
Feb 1, 3, 4	M W Th	6 pm - 10 pm		\$90

Certificate Program
Logan

CDL - Professional Truck Driving



Truck drivers are a constant presence on the nation's highways and interstates, delivering everything from automobiles to food. Come check out our state-of-the-art driving simulator!

To find out more about obtaining your CDL license, see course information below or call Paul at 770.9904.
www.batc.edu

CDL - PROFESSIONAL TRUCK DRIVING

Logan West Campus				CDL201
Begins Jan 19 OR Feb 22	M - Fri	8 am - 2:30 pm		\$2500*

*Text and/or supplies may be required

Certificate Program
Logan & Rich County

Diesel



Do you love big trucks — all kinds? You can turn your passion into a profession. Follow your dream and enroll in this NATEF (National Automotive Technicians Education Foundation) certified program to train and make good money as a top notch diesel technician. Contact Vern at 750.3012 to find out more.

www.batc.edu

**Graduate of the BATC CDL Program
Andrew A. Howard**



**is recognized
for EXCELLENCE
by Werner
Enterprises**

“Werner Enterprises takes extreme pride in knowing that year after year we continue to put on the road the safest, most productive, professional fleet of drivers. We appreciate your staff for the outstanding job you did in helping prepare one of your former students to become a Werner Enterprises team member and to be recognized as one of the most professional drivers on the road today.

We take comfort in the knowledge that your school will continue to provide the trucking industry and Werner Enterprises with high quality and well trained students.”

- Kevin Edic, Associate Vice President of Recruiting
- John Frey, Vice President of School Relations and Government Hiring

**BATC Nursing Prerequisites
USU Courses**

As a service to our future students, the following USU courses will be delivered at the discretion of USU in either a traditional face-to-face format or through interactive video broadcasting, both at BATC. Contact Lisa Ruthven lisa.ruthven@usu.edu for questions regarding these courses.

Registration will begin November 23.
To register please e-mail Lisa at lisaruthven@usu.edu.

If students would like to use financial aid to pay for tuition, they will need to be admitted to USU. Please contact Lisa Ruthven at the above e-mail for help in the admission process.

BIOL 2060 MICROBIOLOGY (4 credits)

Jan 11 - May 7 M W 5:15 pm - 6:45 pm ***
Two lab choices (lab will be held in Brigham City) \$45 Lab Fee
Lab 1: Tues 2:45 pm - 5:15 pm OR **Lab 2:** Tues 5:15 pm - 7:45 pm

BIOL 2420 HUMAN PHYSIOLOGY (4 credits)

Jan 12 - May 7 Tues 5:15 pm - 7:45 pm ***
Jan 14 - May 7 Thurs 5:15 pm - 7:45 pm
4 lab choices (lab will be held in Brigham City) \$45 Lab Fee
Lab 1: Wed 10 am - 12 pm OR **Lab 2:** Wed 12:30 pm - 2:30 pm OR
Lab 3: Wed 2:30 pm - 4:30 pm OR **Lab 4:** Wed 5 pm - 7 pm

BIOL 2520 PATHOPHYSIOLOGY (3 credits)

Jan 12 - May 7 Tues 2:30 pm - 5 pm ***

NFS 1020 HUMAN NUTRITION (3 credits)

Jan 14 - May 7 Thurs 5:15 pm - 7:45 pm ***

PSY 1010 GENERAL PSYCHOLOGY (3 credits)

Jan 11 - May 7 Mon 5:15 pm - 7:45 pm ***

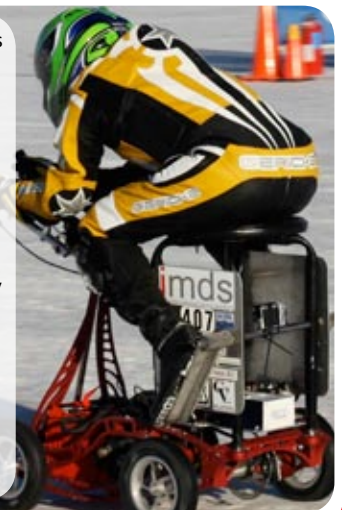
***USU's tuition table can be found at <http://www.usu.edu/registrar/payment/> or you contact Lisa Ruthven at the e-mail listed above for further information on tuition for the USU courses.

BATC Machining Technology students helped build components for the

**World Record
Winning
Barstool Racer**

The Barstool Racer was masterminded by two IMDS engineers, Joe Marietta and Doug Lorraine, and the Racer was driven by Karen Mohr, IMDS engineer.

**View video
footage and find
out more at
www.batc.edu**





High School Seniors! Full-Tuition Scholarship Applications

Due Feb. 28, 2010

Get your applications online at
www.batc.edu or at the
Logan Main or Brigham City Campuses.

Questions?

www.batc.edu

(435) 750-3204 or (435) 750-3114



BRIDGERLAND APPLIED TECHNOLOGY COLLEGE

Employment Through Training

1301 North 600 West

Logan, Utah 84321

435.753.6780 • Toll Free 1.866.701.1100

Nonprofit Org.

U.S. POSTAGE

PAID

Permit 35

Logan, Utah

Thank You!

The Emergency Medical Services
Department at BATC expresses a
sincere thank you to the Logan City
Fire Department for their donations.



Donations directly impact the hands-on experiences
of our students. These generous donations give them a
competitive edge in their chosen career. Thank you for your
support!

Bridgerland Applied Technology College

Day of Design

Fashion & Interior Design

Includes:

4 workshops & lunch

Register Today!

Call: 435.753.6780

\$15

register by January 26
or \$20 at the door

January 30
9 am - 1:30pm

Logan Campus @ 1301 N. 600 W. - south entrance